



**36 Kingsbury Street EDMONDSON PARK NSW**

4  2  2 

**GREAT FAMILY STREET!**

This stunning family home is positioned in an ultra convenient location with easy access to the M5, M7 & Hume Hwy, local primary & secondary schools, plenty of places to shop including a retail shopping centre fronting Camden Valley Way, plus the village square shopping centre only a short stroll away.

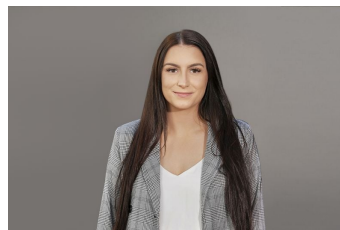
Features include:

- ? Open Plan living
- ? Kitchen features a gas cook top with stainless steel appliances & ample bench space
- ? Four bedrooms including an En-suite to the Master

[For full version visit the website](https://www.riverbankrealestate.com.au/8302350)

**Type** : House

**View** : <https://www.riverbankrealestate.com.au/8302350>



**Alanna Bhardwaj**  
02 9631 4433



**Amanda Ali**  
02 9631 4433