



**58 Hartlepool Street EDMONDSON PARK NSW**

4  2  1 

### MODERN FAMILY HOME

Don't miss out on this beautifully presented home which is situated in the ever growing, conveniently located Edmondson Park.

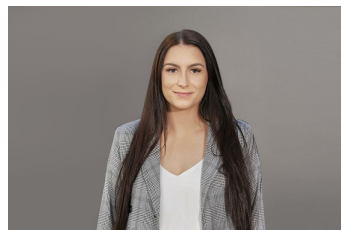
With everything on your doorstep, this home is in a prime location.

Featuring four great sized bedrooms, with built in wardrobes and large light filled living spaces, this property does not disappoint.

Other features include:

**Type** : House

**View** : <https://www.riverbankrealestate.com.au/8302351>



**Alanna Bhardwaj**  
02 9631 4433



**Amanda Ali**  
02 9631 4433

[For full version visit the website](https://www.riverbankrealestate.com.au)