



**5 Memphis Crescent TOONGABBIE NSW**

3  2  2 

Wonderful presentation, this rejuvenated family home has nothing to do but simply move in.

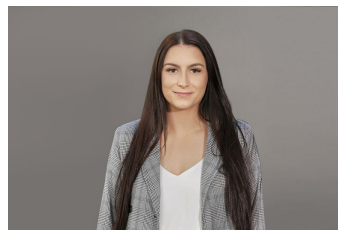
Two light filled living spaces, large open kitchen, mix of slate & timber flooring all combine to create a flexible & versatile home.

Conveniently positioned in a whisper quiet location and opposite Oklahoma Park reserve, this solid three bedroom brick family home represents perfect value. It is located only a short stroll to local shops, bus routes and within the Metella road public school catchment.

Features Include:

**Type** : House

**View** : <https://www.riverbankrealestate.com.au/8302520>



**Alanna Bhardwaj**  
02 9631 4433



**Stephanie Halteh**  
02 9631 4433

[For full version visit the website](https://www.riverbankrealestate.com.au)