



**Pemulwuy, NSW**  
10/124 Driftway Drive

**1**  
BED

**1**  
BATH

**1**  
CAR

 **RIVERBANK**

### Work, live & play

This well presented apartment represents a great opportunity to get your foot in the Pemulwuy property market. Enjoy a modern open plan styled home which flows to a large outdoor private courtyard, an ideal space for these who love to entertain. Set within a solid brick complex and capturing leafy outlooks, it holds a quiet yet convenient location within a short stroll to village shops and cafes. An ideal first home in a key location, this is an affordable entry level prospect that also offers excellent investment potential.

Features Include:

- Massive open plan.

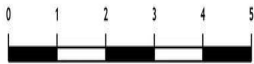
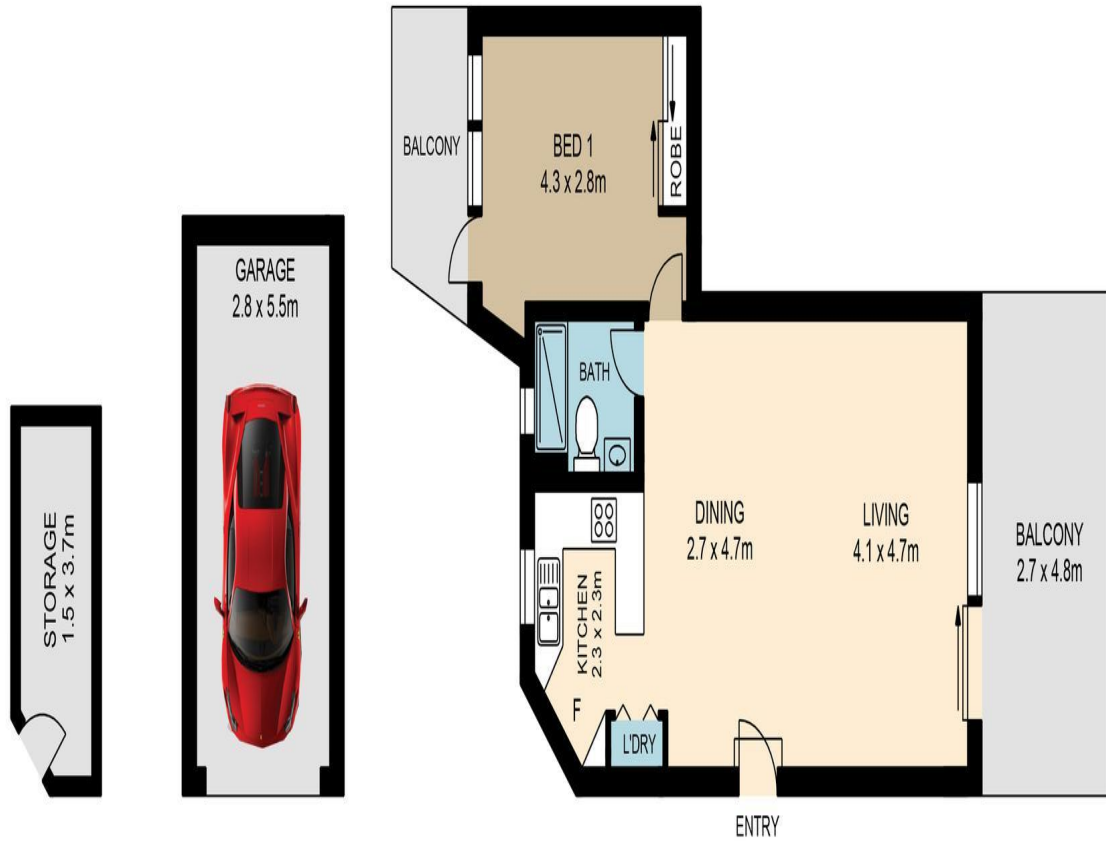
**PRICE GUIDE** | \$380,000 - \$420,000

**Contact:** Steven Josevski  
0296314433  
Joshua Demetriou  
0421310802

**Type:** Unit  
**Land:** 110m2

<https://www.riverbankrealestate.com.au>

10/124 DRIFTWAY DRIVE, PEMULWUY



www.assetphotographers.com.au



Please note these measurements are approximate only. The plans are intended as a rough guide for illustrative purpose. It is not warranted or guaranteed to be correct nor is it part of the sale or rental contract



Plans shown are only indicative of layout. Dimensions are approximate.

**Pemulwuy, NSW**  
10/124 Driftway Drive